



ARTS HIGH SCHOOL

GUITAR Audition Requirements

- All students applying for admission to Arts High School as Music Majors must audition.
 - Students can sign up for an audition on the Arts High School website.
 - Preparation for this audition should be done under the direction of the student's music teacher.
-

Guitar Audition Requirements are:

1. SCALES/RUDIMENTS

- Guitar prospects must play two-octave C Major Scale. Students must then choose one additional two-octave scale in the keys of either- F, B flat, G, or D
- Preferably, guitar prospects should play the scales from the Segovia scale book, plucked by using right hand index and middle (i-m) fingers.

2. PREPARED SELECTION

- *ALL guitar prospects must play the notes to "My Heart will Go On" (provided on the following pages), followed by demonstrating the ability to strum each chord on the same song page.*

3. SIGHT READING

- Students will be asked to sight-read a short piece at the audition.

**ALL GUITAR STUDENTS MUST AUDITION ON THEIR OWN GUITAR
(nylon string classical guitar preferred).**

MY HEART WILL GO ON

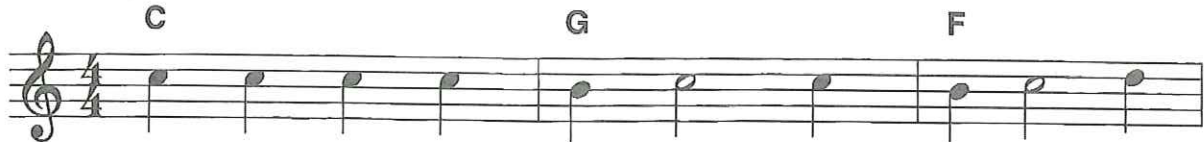
(Love Theme from 'Titanic')

from the Paramount and Twentieth Century Fox Motion Picture TITANIC

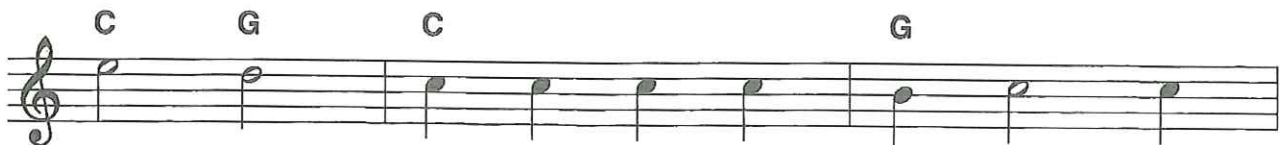
Music by JAMES HORNER

Lyric by WILL JENNINGS

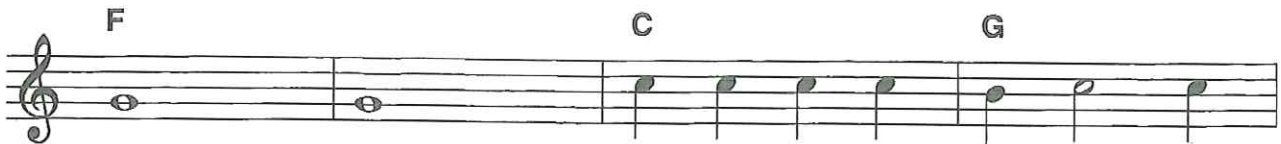
Verse



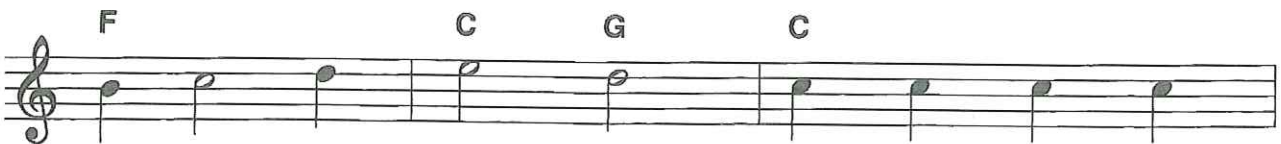
1. Ev - 'ry night in my dreams I see you, I
2. Love can touch us one time and last for a



feel you. That is how I know you go
life - time, and nev - er let go till we're



on. _____ Far a - cross the dis - tance and
gone. _____ Love was when I loved you; one



spac - es be - tween us, you have come to
true time I hold to. In my life we'll



show you go on. _____ }
al - ways go on. _____ }

Copyright © 1997 by Famous Music Corporation, Ensign Music Corporation, TCF Music Publishing, Inc.,

Fox Film Music Corporation and Blue Sky Rider Songs

All Rights for Blue Sky Rider Songs Administered by Irving Music, Inc.

International Copyright Secured All Rights Reserved

Chorus

Am G F

Near, far, wher - ev - er you

G Am G

are, I be - lieve that my heart does go

F G Am G

on. _____ Once more you

F G Am

o - pen the door, and you're here in my

Em F G

heart, and my heart will go on and

1. Am G F whole rest G

on. _____

2. C G F C

on. _____